

Digital Full Colour Production Presses

RICOH
imagine. change.

Ricoh Pro™ C7200sx Series Graphic Arts Edition

☑ Copier ☑ Printer ☑ Scanner



**Ricoh Pro
C7210sx**

95	Black & white
ppm	Full colour

**Ricoh Pro
C7200sx**

85	Black & white
ppm	Full colour

Stand out from the crowd

You need to stand out from the crowd to be able to grow and expand your business. You need innovation, high quality and productivity with great value.

The Ricoh Pro C7200sx Series has all this and much more. Combining high productivity with high quality, these new models also handle up to five speciality colours, boosting your special effects capabilities so you're perfectly positioned to expand your business.

Every model in the Ricoh Pro C7200sx Series is a single-unit powerhouse, designed to meet the market's ever changing needs and open up new business possibilities.



Ricoh Pro C7200sx Series Graphic Arts Edition

Transforming your printing possibilities with fifth colour



Add extra value to your print services with fifth colour and add impact to your print.

Whether it's a clear varnish to accentuate designs, white as an undercoat or a security code that can only be seen under ultraviolet light, add impact to your offerings. Ricoh's colour range now includes white, clear, neon yellow, neon pink and invisible red. To stretch imaginations, you can also switch colour stations, to add further impact to your print work. Imagine one job being able to include both white and clear for example.

- Fifth colour adds impact, appeal and value to commercial print.
- Use a clear varnish to add a watermark or accentuate a graphic design.
- Print a white background directly on coloured and translucent media.
- Invisible red toner can be used for entry level security print applications such as ticketing.
- White + CMYK can be printed in a single pass enhancing impact on coloured media, and increasing productivity.
- By adding neon colours we can extend the colour gamut further, to support meeting brand colour requirements.





Outstanding image quality

Ricoh's production presses produce repeatable colour output with a look and feel that is comparable to offset – with no compromise on quality. The imaging system employs VCSEL technology (vertical cavity surface emitting lasers), ultra-fine PxP chemical toner and an oil-less fusing system to produce a beautifully rendered output.

The PxP toner has a wide colour gamut, enabling the printers to produce vivid lifelike colours with smooth tonal gradation.

- Print quality that is comparable to offset.
- Vivid lifelike colours, smooth tonal gradation and fine lines.
- Low toner pile height minimises glossiness.
- Precise front/back registration with added automatic quality control.

Extensive media support



The Pro C7200sx Series supports media weights of 52 to 360gsm at full rated speed and will print onto a wide variety of stock, including gloss and matt coated offset media, textured card, carbonless paper and envelopes.

Further expanding the range of potential applications, the new production presses also support duplex printing on media up to 700mm and simplex printing of long sheet stock up to 1260mm.

The onboard media library, which contains automated settings for a variety of branded media types, simplifies set-up and ensures reliable performance.

- Pro C7200sx Series supports media weights of 52 to 360gsm.
- Gloss and matt coated offset media, textured card and carbonless paper.
- Extensive onboard media library contains settings for a variety of branded media.
- New media management tool (MMT) allows settings to be shared between devices.

Productive performance

Production printing operations require reliable and productive technology that allows you to produce high quality print output at an affordable price. Outstanding repeatable image quality is a must, and required to support businesses wishing to move to a digital print platform as a support or replacement to their offset equipment.

- Speeds at up to 85 or 95ppm (A4).
- Full engine speed maintained at all paper weights.
- Auto duplex long sheet printing up to 700mm. Simplex up to 1260mm.
- Trained operator replaceable units for ultimate uptime.
- Easy jam removal with animated guidance and LED lights.



Multi-platform support

To support clients with Fiery workflows, powerful EFI print servers are available. Based on the new Fiery FS350 Pro system software, the colour Digital Front Ends E-86A and E-46A lever the latest Fiery technology enhancements to deliver a fast performance and outstanding colour out of the box.

The TotalFlow Print Server offers an Adobe PDF Print Engine (APPE) based Digital Front End perfect for handling either PDF or IPDS / AFP data streams (option). Clients can connect to existing pre-press workflows (Kodak Prinergy, Agfa Apogee and Heidelberg Prinect) using industry standard JDF technology enabling seamless integration and bi directional feedback on job status.



TotalFlow Prep

TotalFlow Prep provides a highly functional, easy to use make-ready application for corporate print rooms and copy shops.

TotalFlow Prep offers powerful tools for imposition, composition, scanned copy correction, page level editing and more. Repeat tasks and jobs can be automated via hot folders and traditionally complex tasks such as adding tabs, bleed edge tabs and sub-set finishing can quickly be added, previewed and managed for output with ease.

TotalFlow Production Manager

TotalFlow Production Manager offers a complete job management solution for corporate print rooms and copy shops where there is the requirement to manage and queue jobs for output across multiple engines or where there are large quantities of jobs to manage to meet challenging schedules and deadlines.

TotalFlow Production Manager allows job status, job priority and media libraries to be managed from a single solution complete with optional advanced imposition and integrated pre-flight.

TotalFlow Production Manager and **TotalFlow Prep** can be used with a variety of Digital Front Ends including TotalFlow Print Server and EFI Fiery and a custom connector offers connectivity to third party solutions (professional services costs may apply).

Color-Logic Inc

Color-Logic offers a solution that eases the challenges associated with designing, communicating and printing CMYK + White onto metallic and specialised substrates for output on the Ricoh Pro C7200sx Series colour sheet fed digital press.

Color-Logic drives value and profit for both you and your clients, allowing you to offer corporate clients and agencies stand out for their products on the shelf, no matter whether it is the front page of a special edition magazine, short run packaging, business cards or invitations for a special event or occasion.

New options

Inline Finisher

- Enhanced saddle-stitching capabilities with max 30 sheets (80gsm).
- Support up to 350gsm.
- More robust finisher with non-stop operation.
- Increased stack capacity with dual shift trays (1000 sheets, 3500 sheets).



Air Assist Interposer

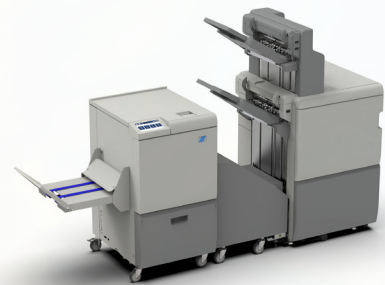
- Coated paper can be fed continuously by air assisted feeding from the leading edge.
- Support up to 350gsm.
- 2-trays 200 sheets per tray.



Plockmatic Square Back Trimmer

Square Back Trimmer is a face trimmer and square fold unit.

- Makes professional 120-page booklets.
- Inline system is fully integrated with Ricoh booklet maker.
- Offline mode enables 2-sided trimming of the booklets, top and bottom.
- The Square back feature offers you more professional-looking documents.



Plockmatic Long Sheet Booklet Maker 5000

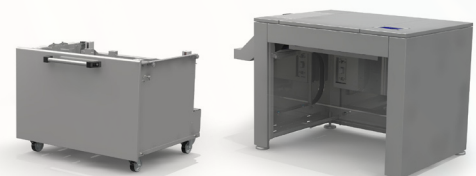
A long sheet booklet maker fully integrated with the Ricoh press.

- Enables A4 sized landscape booklets, professional 200 page (or 140 page) stapled or stitched and square folded booklets.
- Supports up to 350 gsm media coated or un-coated for a wide variety of applications.
- Available with stitch heads for heavy production sites.
- Exclusive features include square back and bleed trim capabilities.



BDT VX370-1280 Long Sheet LCT

- BDT vacuum-free Tornado technology for outstanding feeding and media separation.
- Media format range: Width: 210–364mm/Length: 210 –1280mm.
- Robust sheet metal design to accommodate a stack height of up to 500mm.



Ricoh Pro™ C7200sx Series

SYSTEM SPECIFICATIONS

GENERAL

Model Name:	Pro C7200x, Pro C7210x, Pro C7200sx, Pro C7210sx
Technology:	5-drum dry electrostatic transfer system with internal transfer belt
Fusing:	Oil-less, belt fusing method
Print Speed:	Pro C7200x & Pro C7200sx - 85ppm Pro C7210x & Pro C7210sx - 95ppm
Resolution:	VCSEL 2400x4800dpi
Warm Up Time	Less than 300 sec.
Dimensions (WxDxH):	Pro C7200x & Pro C7210x - 1320 x 910 x 1218mm Pro C7200sx & Pro C7210sx - 1320 x 910 x 1230mm
Weight:	Pro C7200x & Pro C7210x - Less than 560kg Pro C7200sx & Pro C7210sx - Less than 580kg
Power Source:	220-240V, 16A x2, 50/60Hz
Power Consumption:	Less than 5,000W
Life:	14,400,000 A4 prints or 5 years

MEDIA HANDLING

Paper Input Capacity:	1st Tray (std) 1,000 sheets x2 (Tandem) 2nd Tray (std) 500 sheets Optional: A3/DLT/LCT 3rd Tray 1,000 sheets 4th Tray 2,000 sheets 5th Tray 1,000 sheets Optional: Vacuum Feed LCT All Trays 2,200 sheets each (Trays 3 - 8)
Optional:	Bypass Tray 500 sheets
Maximum Printable Area:	323 x 480mm / 12.7" x 18.9" 323 x 1252mm / 12.7" x 49.2" (when using optional banner sheet tray)
Paper Weight:	1st Tray (std) 52 - 300gsm 2nd Tray (std) 52 - 256gsm Optional: A3/DLT/LCT 3rd Tray 52 - 256gsm 4th Tray 52 - 360gsm 5th Tray 52 - 256gsm Optional: Vacuum Feed LCT All Trays 52 - 360gsm (Trays 3 - 8) Optional: Bypass Tray 52 - 216gsm
Duplex:	52 - 360gsm

DIGITAL FRONT ENDS

E46-A

Configuration:	Optional: External
System Version:	Fiery System FS350 Pro
CPU:	Intel i5-6500 (3.2GHz up to 3.6GHz with Turbo)
Memory:	8GB (4GB x 2)
HDD:	1TB
CD-ROM Drive:	Supported DVD RW Drive
Operating System:	Windows 10 Enterprise Systems x64

E86-A

Configuration:	Optional: External
System Version:	Fiery System FS350 Pro
CPU:	Intel® Xeon® Gold 5118 processor, 2.3 GHz up to 3.2 GHz with Turbo
Memory:	32 GB RAM
HDD:	500GB + 2 x 2TB SATA RAID 0
CD-ROM Drive:	Supported DVD RW Drive
Operating System:	Windows 10 Enterprise Systems x64

TotalFlow Print Server R-62A

Configuration:	Optional: External
CPU:	6th Gen Core i7 - 6700 3.4GHz
Memory:	Standard: 32GB (16GB x 2) Optional: 32GB (16GB x 2)
HDD:	Standard: 1TB SATA x 3 Optional: 1TB x 1
CD-ROM Drive:	Supported DVD Drive
Operating System:	Linux

Other Options

Vacuum Feed LCT (RT5120), Bridge Unit (BU5010), Cover Interposer (CI5040), Multi Bypass Tray (BY5020), Multi Bypass Banner Sheet Tray, Vacuum Feed Banner Tray, BDT Banner Sheet LCT (VX1280,370), Staple Finisher (SR5110), Booklet Finisher (SR5120), Front Edge Trimmer (TR5050), High Capacity Stacker (SK5040), High Capacity Interposer Tray (HCI3500), Ring Binder (RB5020), Perfect Binder (GB5010), Multi Folding Unit (FD5020), 2-4 Hole Punch units, GBC StreamPunch, GBC StreamWire, Plockmatic Square Back Trimmer (SBT), Plockmatic Long Sheet Booklet Maker (PBM5035/5035s), Plockmatic Booklet Maker (PBM350/500), Plockmatic PowerSquare Booklet Maker, Duplo Booklet Maker, Plockmatic Long Sheet Stacker (MPS)

Workflow Solutions

Ricoh TotalFlow Prep and Production Manager, Ricoh ProcessDirector, BatchBuilder, MarcomCentral, FusionPro VDP Suite, EFI Digital StoreFront, Colour Profiler Suite, Graphic Arts Premium Package, Impose, Compose, Fiery Central OL Connect Suite, CGS ORIS Lynx & PressMatcher, Color-Logic Inc, Touch7.

Please Note: Unless stated otherwise the data used in this brochure is based on A4 80gsm standard media.

RICOH
imagine. change.

www.ricoh-europe.com

The facts and figures shown in this brochure relate to specific business cases. Individual circumstances may produce different results. All company, brand, product and service names are the property of and are registered trademarks of their respective owners. Copyright © 2018 Ricoh Europe PLC. All rights reserved. This brochure, its contents and/or layout may not be modified and/or adapted, copied in part or in whole and/or incorporated into other works without the prior written permission of Ricoh Europe PLC.